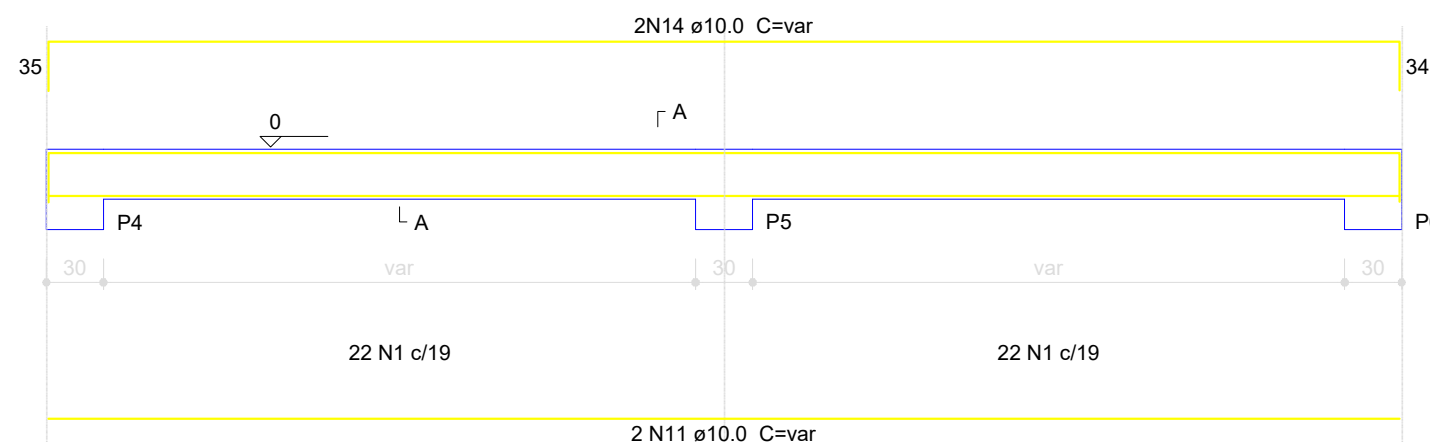
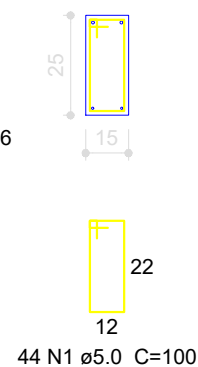


Demais Vigas

ESC 1:50

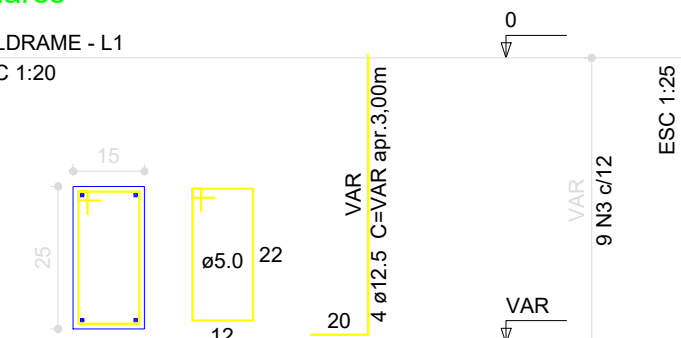


SEÇÃO A-A
ESC 1:25



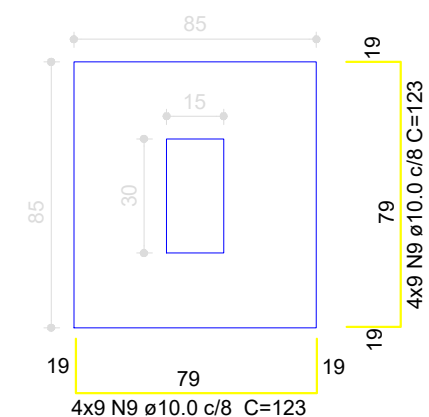
Pilares

BALDRAME - L1
ESC 1:20



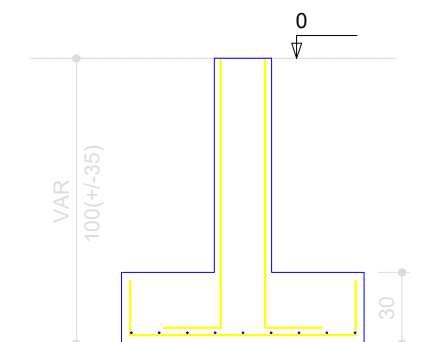
Sapatas

PLANTA
ESC 1:25



Solo compactado sobre a sapata
peso específico > 1600.00 kgf/m³

CORTE
ESC 1:25



AMPLIAÇÃO POSTO DE SAÚDE

ENDEREÇO:

Avenida Rio Grande

RESPONSÁVEL TÉCNICO:

Michel Ostroski CREA RS 248375

PROPRIETÁRIO:

Município de Paim Filho/RS

DATA:

17/07/2023

PRANCHA:

06